

ROCKFORD

Drive Line



***Light Duty, Medium Duty & Heavy Duty
Including Conversion Designs***

MANUFACTURER OF DRIVELINE COMPONENTS
1500 11TH AVENUE ROCKFORD, ILLINOIS 61104
PHONE (815) 962-1411 FAX (815) 965-4857
RockfordDriveLine.com

How to Use This Section

Determine which type of flange yoke you need by referring to the illustrations and descriptions at the top of each page.

To identify a (Flange Yoke)

1. Determine the yoke type you need listed at the top of each page.
Standard Applications indicate the flange yoke uses round bearings.
Bearing Plate Applications indicate the flange yoke is only used on applications requiring a universal joint mounted by bearing plates.
Conversion Applications indicate the flange yoke is used to convert different designed flanges to fit more common series universal joints.
2. Determine the **Series** of the yoke. For Standard, Bearing Plate & Conversion applications this can be determined by measuring the bearing diameter **(A)** and snap ring lockup **(B)**.
3. Determine the **Pilot Diameter** & Style (M - Male / F - Female) **(C)**.
4. Next determine the number of **Holes** & **Bolt Hole Dimension (D)**, followed by the Bolt Hole Pattern **(E & F)**

Centerline to Flange End (G) dimensions & Bolt Circle are also included for additional identification.

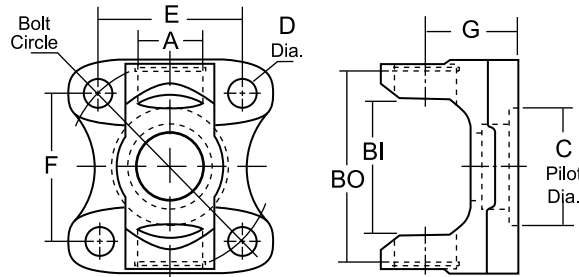
RDL Part No.	Yoke Type	A Bearing Dia.	BI / BO U-Joint Lockup	C Pilot Dia.	Bolt Hole Dim.				CL to Flng End	G Bolt Circle
					Holes	D	E	F		

1350 Series

Use RDL Kit - K178

R3-2-1579	Type 1	1.188	3.622-(O)	2.000-F	4	.500	3.000	3.000	1.563	4.250
R3-2-119	Type 1	1.188	3.622-(O)	2.750-M	4	.438	2.875	2.406	1.563	3.750

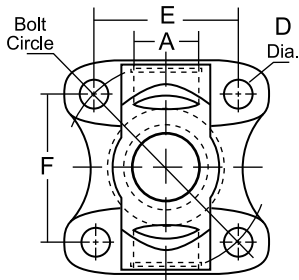
FLANGE YOKE (Standard Applications)



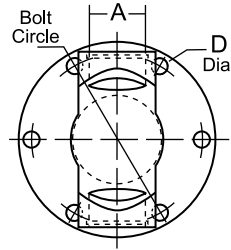
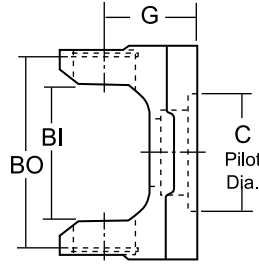
Type 1

RDL Part No.	Yoke Type	A Bearing Dia.	BI / BO U-Joint Lockup	C Pilot Dia.	Bolt Hole Dim.			G CL to Flng End	Bolt Circle	
					Holes	D	E			F
2R Series					Use RDL Kit - K2011					
R2R-2-293	Type 1	1.000	2.339-(I)	2.375-M	4	.380	2.389	2.002	1.438	3.120
1210 Series					Use RDL Kit - K443					
R2-2-1049	Type 1	1.063	2.437-(O)	2.000-F	4	.484	2.469	2.469	1.625	3.500
1210 Series (Conversion Applications)					Use RDL Kit - K443					
R2-2-899	Type 1	1.063	2.437-(O)	2.250-M	4	.328	2.106	1.766	1.484	2.750
R2-2-1050	Type 1	1.063	2.437-(O)	2.875-F	4	.413	2.784	2.784	1.625	3.937
									*Nissan & Toyota Bolt Pattern	
									*GM Cage & Ball Housings	
1310 Series					Use RDL Kit - K153					
R2-2-939	Type 1	1.063	3.217-(O)	2.000-F	4	.484	2.469	2.469	1.625	3.500
R2-2-1379	Type 1	1.063	3.217-(O)	2.000-F	4	.484	3.000	3.000	1.625	4.250
R2-2-329	Type 1	1.063	3.217-(O)	2.375-M	4	.375	2.390	2.015	1.375	3.125
R2-2-459	Type 1	1.063	3.217-(O)	2.375-M	4	.375	2.390	2.015	1.625	3.125
R2-2-1949	Type 1	1.063	3.217-(O)	2.558-M	4	.484	2.651	2.651	1.781	3.750
R2-2-479	Type 1	1.063	3.217-(O)	2.750-M	4	.438	2.875	2.412	1.375	3.750
1310 Series (Conversion Applications)					Use RDL Kit - K153					
R2-2-3173	Type 1	1.063	3.217-(O)	1.770-M	4	.406	2.677	2.677	1.625	3.781
									*Mazda Bolt Pattern	
R2-2-799	Type 1	1.063	3.217-(O)	1.809-M	4	.328	2.520	2.202	1.375	3.343
									*Toyota Bolt Pattern	
R2-2-799-1	Type 1	1.063	3.217-(O)	1.809-M	4	.406	2.358	2.358	1.375	3.330
									*Toyota Bolt Pattern	

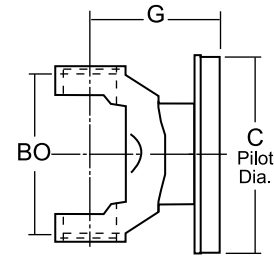
FLANGE YOKE (Standard Applications)



Type 1



Type 2



RDL Part No.	Yoke Type	A Bearing Dia.	BI / BO U-Joint Lockup	C Pilot Dia.	Bolt Hole Dim.			G CL to Fling End	Bolt Circle
					Holes	D	E		

1310 Series (Conversion Applications) cont.

Use RDL Kit - K153

R2-2-799-2	Type 1	1.063	3.217-(O)	1.809-M	4	.406	2.520	2.202	1.375	3.340
									*Toyota Bolt Pattern	
R2-2-799-3	Type 1	1.063	3.217-(O)	1.809-M	4	.406	2.696	2.364	1.563	3.575
									*Toyota Bolt Pattern	
R2-2-799-4	Type 1	1.063	3.217-(O)	1.809-M	4	.445	2.596	2.596	1.563	3.670
									*Toyota Bolt Pattern	
R2-2-4811**	Type 1	1.063	3.217-(O)	1.849-M	4	.406	2.358	2.358	1.375	3.330
									*BMW Bolt Pattern	
R2-2-3100	Type 1	1.063	3.217-(O)	2.363-M	4	.438	2.390	2.003	1.625	3.118
									*Jeep Cage & Ball Housings	
R2-2-3192	Type 1	1.063	3.217-(O)	2.375-M	4	.393	2.390	2.015	1.625	3.125
									*Land Rover Discovery Bolt Pattern	
R2-2-1519	Type 1	1.063	3.217-(O)	2.563-M	4	.406	2.706	1.967	1.625	3.346
									*Isuzu Bolt Pattern	
R2-2-3149	Type 1	1.063	3.217-(O)	2.875-F	4	.413	2.784	2.784	1.625	3.937
									*GM Cage & Ball Housings	
R2-2-3185	Type 2	1.063	3.217-(O)	3.819-M	6	.328	—	—	2.656	3.375
									*Jeep Cage & Ball Housings	
R2-2-3101	Type 2	1.063	3.217-(O)	3.914-M	6	.328	—	—	2.656	3.375
									*Jeep Cage & Ball Housings	
R2-2-3102	Type 2	1.063	3.217-(O)	4.093-M	6	.344	—	—	2.656	3.586
									*Ford Cage & Ball Housings	

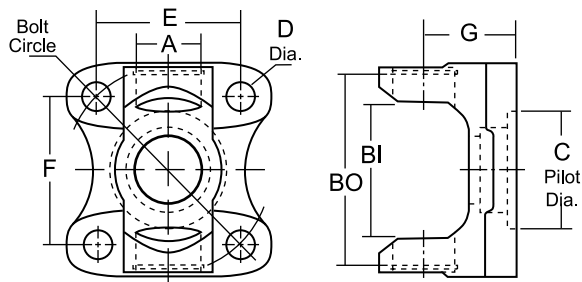
1330 Series

Use RDL Kit - K1203 or K213

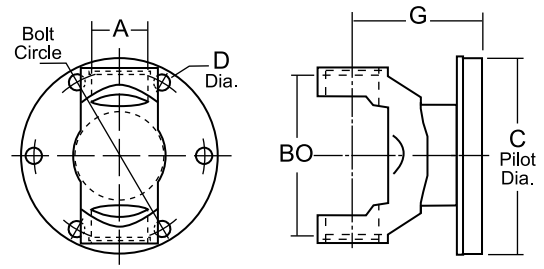
R2-2-949	Type 1	1.063	3.622-(O)	2.000-F	4	.484	2.469	2.469	1.625	3.500
R2-2-1369	Type 1	1.063	3.622-(O)	2.000-F	4	.500	3.000	3.000	1.688	4.250
R2-2-1879	Type 1	1.063	3.622-(O)	2.161-F	4	.480	2.784	2.784	1.875	3.937

** New addition to MC0612-2 catalog

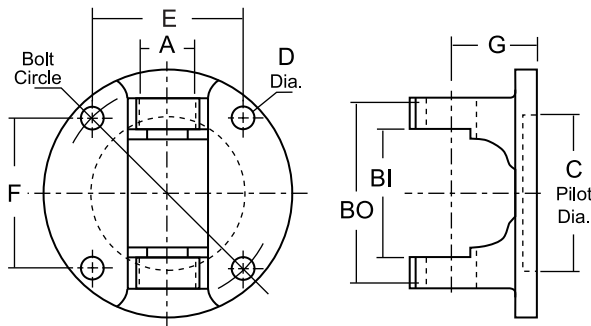
FLANGE YOKE (Standard Applications)



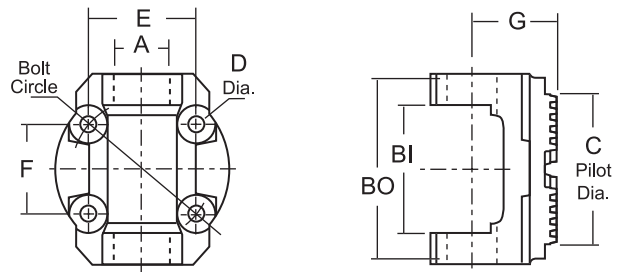
Type 1



Type 2



Type 3



Type 7

RDL Part No.	Yoke Type	A Bearing Dia.	BI / BO U-Joint Lockup	C Pilot Dia.	Bolt Hole Dim.			G CL to Flng End	Bolt Circle
					Holes	D	E		

1330 Series (Conversion Applications)

Use RDL Kit - K1203 or K213

R2-2-1399	Type 3	1.063	3.622-(O)	3.125-F	4	.453	3.000	3.000	1.688	4.250
R2-2-3189	Type 2	1.063	3.622-(O)	3.625-M	4	.418	3.150	3.150	3.438	4.455

*Saginaw Bolt Pattern
*Hummer H3 & GMC Colorado Cage & Ball Housings

3R Series

Use RDL Kit - K3147

R3R-2-675**	Type 1	1.125	2.563-(I)	2.163-F	4	.502	2.783	2.783	1.938	3.938
R3R-2-8268	Type 3	1.125	2.563-(I)	3.125-F	4	.453	3.000	3.000	1.703	4.250
R3R-2-9801**	Type 7	1.125	2.563-(I)	Serrated	4	.335	2.235	1.875	2.087	2.913

2.5R Series

Use RDL Kit - K1510

R25-2-422	Type 1	1.142	2.047-(I)	1.809-M	4	.328	2.520	2.202	1.438	3.340
R25-2-422A	Type 1	1.142	2.047-(I)	1.809-M	4	.406	2.358	2.358	1.768	3.334
R25-2-422B	Type 1	1.142	2.047-(I)	1.809-M	4	.406	2.364	2.696	1.768	3.586

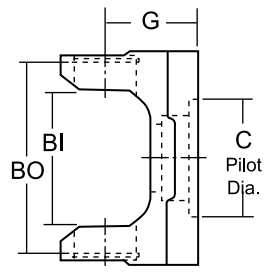
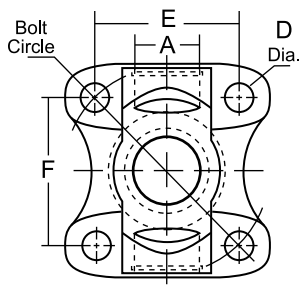
2.5R Series (You Drill It - No Holes)

Use RDL Kit - K1510

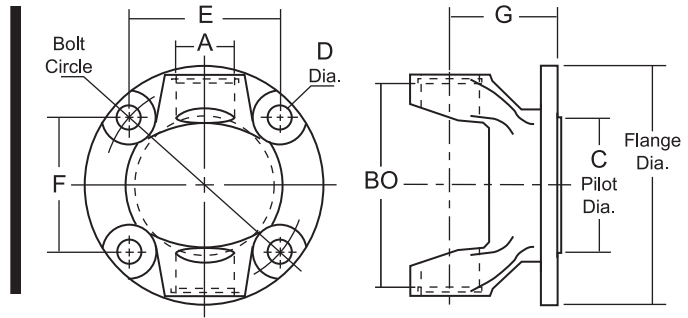
R25-2-422ALH	Type 1	1.142	2.047-(I)	1.809-M	0	solid	solid	solid	1.768	solid
--------------	--------	-------	-----------	---------	---	-------	-------	-------	-------	-------

*Toyota Pilot, no bolt holes. Drill to suit your needs

FLANGE YOKE (Standard Applications)



Type 1



Type 6

RDL Part No.	Yoke Type	A Bearing Dia.	BI / BO U-Joint Lockup	C Pilot Dia.	Bolt Hole Dim.			G CL to Flng End	Bolt Circle
					Holes	D	E		

1350 Series

Use RDL Kit - K178

R3-2-1579	Type 1	1.188	3.622-(O)	2.000-F	4	.500	3.000	3.000	1.563	4.250
R3-2-1699	Type 1	1.188	3.622-(O)	2.680-F	4	M12x1.75	3.000	3.000	1.500	4.250
R3-2-16990**	Type 1	1.188	3.622-(O)	2.680-F	4	.470	3.000	3.000	1.500	4.250
R3-2-119	Type 1	1.188	3.622-(O)	2.750-M	4	.438	2.875	2.406	1.563	3.750
R3-2-5913	Type 1	1.188	3.622-(O)	2.859-F	4	.500	3.182	3.182	2.000	4.500

1410 Series

Use RDL Kit - K160

R3-2-1819	Type 1	1.188	4.182-(O)	2.000-F	4	.500	3.000	3.000	1.625	4.250
R3-2-159	Type 1	1.188	4.182-(O)	2.750-M	4	.438	2.875	2.406	1.688	3.750
R3-2-3700	Type 6	1.188	4.182-(O)	70mm-M	4	.480	3.018	2.538	2.167	3.940
R3-2-2500**	Type 1	1.188	4.182-(O)	3.750-M	4	.510	3.359	3.359	2.094	4.750
R3-2-429	Type 1	1.188	4.182-(O)	3.750-M	4	.500	3.640	3.031	2.000	4.750

1480 Series

Use RDL Kit - K188

R3-2-479	Type 1	1.375	4.182-(O)	3.750-M	4	.500	3.640	3.031	2.000	4.750
----------	--------	-------	-----------	---------	---	------	-------	-------	-------	-------

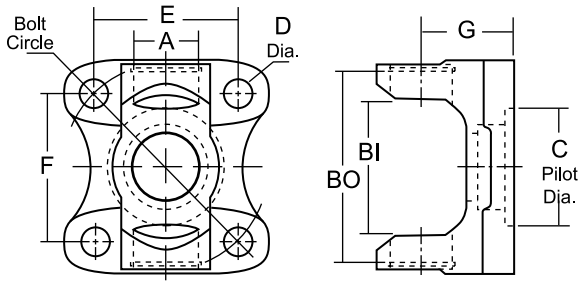
1485 Series - AAM

Use RDL Kit - K1485

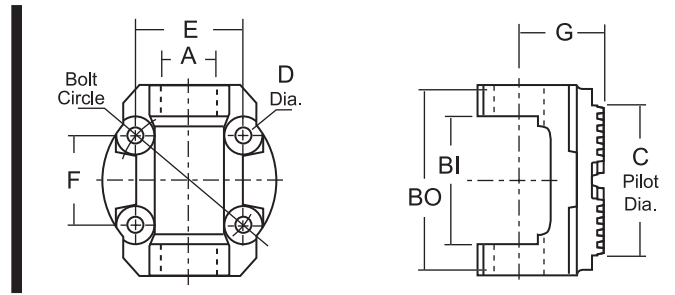
R3-2-2502**	Type 1	1.375	4.177-(O)	3.750-M	4	.500	3.359	3.359	2.250	4.750
-------------	--------	-------	-----------	---------	---	------	-------	-------	-------	-------

** New addition to MC0612-2 catalog

FLANGE YOKE (Standard Applications)



Type 1

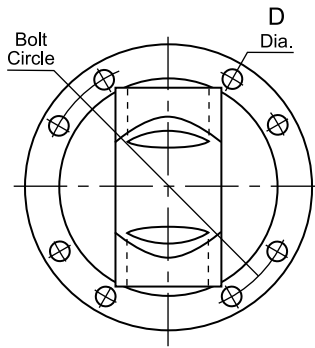


Type 7

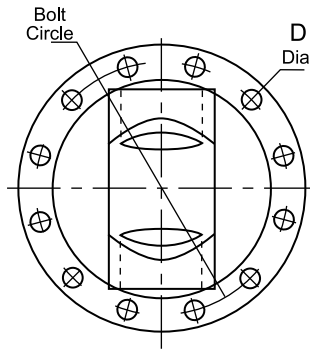
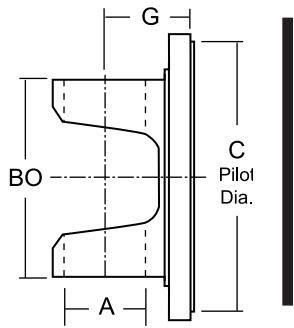
RDL Part No.	Yoke Type	A Bearing Dia.	BI / BO U-Joint Lockup	C Pilot Dia.	Bolt Hole Dim.			G CL to Flng End	Bolt Circle	
					Holes	D	E			F
1550 Series		Use RDL Kit - K155								
R4-2-669	Type 1	1.375	4.966-(O)	3.750-M	4	.500	3.640	3.031	2.000	4.750
1555 Series - AAM		Use RDL Kit - K1555								
R4-2-8046**	Type 7	1.375	4.960-(O)	Serrated	4	.413	3.359	3.359	2.750	4.750
R4-2-8047**	Type 1	1.375	4.960-(O)	3.750-M	4	.500	3.359	3.359	2.250	4.750

** New addition to MC0612-2 catalog

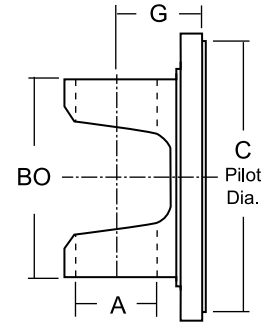
FLANGE YOKE (Bearing Plate Applications)



Type 4



Type 5



RDL Part No.	Yoke Type	A Bearing Dia.	BI / BO U-Joint Lockup	C Pilot Dia.	Bolt Hole Dim.			G CL to Flng End	Bolt Circle	
					Holes	D	E			F
1610 Series					Use RDL Kit - K279					
R5-2-279	Type 4	1.875	5.312-(O)	6.625-M	8	.375	—	—	2.750	6.125
1710 Series					Use RDL Kit - K280					
R6-2-749	Type 4	1.938	6.094-(O)	7.750-M	8	.375	—	—	3.000	7.250
1810 Series					Use RDL Kit - K281					
R6.5-2-329	Type 5	1.938	7.547-(O)	7.750-M.	12	.438	—	—	3.375	7.250

FLANGE YOKE NOTES & TIPS





PART NUMBER INTERCHANGE LIST

MFG. NO.	OUR NO.	MFG. NO.	OUR NO.	MFG. NO.	OUR NO.
AAM (American Axle)		Neapco (Cont.)		Spicer (Cont.)	
40030675.....	R3R-2-675	N3-2-141.....	R3-2-5913	2-2-1379	R2-2-1379
40038046.....	R4-2-8046	N3-2-159.....	R3-2-159	2-2-1399	R2-2-1399
40038047.....	R4-2-8047	N3-2-429.....	R3-2-429	2-2-1519	R2-2-1519
74082500.....	R3-2-2500	N3-2-479.....	R3-2-479	2-2-1609	R2-2-3100
74082502.....	R3-2-2502	N3R-2-8268	R3R-2-8268	2-2-1679	R2-2-799-1
74085913.....	R3-2-5913	N4-2-669.....	R4-2-669	2-2-1879	R2-2-1879
74088268.....	R3R-2-8268	N5-2-279.....	R5-2-279	2-2-1949	R2-2-1949
74088507.....	R3-2-2502	N6-2-749.....	R6-2-749	3-2-119	R3-2-119
74089801.....	R3R-2-9801	N6.5-2-329.....	R6.5-2-329	3-2-159	R3-2-159
Meritor		PTI (Powertrain Industries)		3-2-1579	R3-2-1579
121N-2-899.....	R2-2-899	1302-15	R25-2-422A	3-2-1699	R3-2-1699
121N-2-1049.....	R2-2-1049	1302-16	R25-2-422	3-2-1819	R3-2-1819
121N-2-1050.....	R2-2-1050	3102-15	R2-2-799-1	3-2-429	R3-2-429
131N-2-329.....	R2-2-329	3102-16	R2-2-799	3-2-479	R3-2-479
131N-2-479.....	R2-2-479	3102-18	R2-2-799-2	4-2-669	R4-2-669
131N-2-799.....	R2-2-799	3102-86	R2-2-3101	5-2-279	R5-2-279
131N-2-799-1	R2-2-799-1	3102-91	R2-2-3102	6-2-749	R6-2-749
131N-2-939.....	R2-2-939	3302-1369	R2-2-1369	6.5-2-329	R6.5-2-329
135N-2-119.....	R3-2-119	3502-1579	R3-2-1579		
141N-2-159.....	R3-2-159	3R02-21.....	R3R-2-8268		
141N-2-429.....	R3-2-429	Rockford (Old Numbers)			
148N-2-479.....	R3-2-479	404-31FY.....	R2-2-939		
155N-2-669.....	R4-2-669	404-31FYA.....	R2-2-3101		
16N-2-279.....	R5-2-279	404-31FYC	R2-2-3100		
R3R-2-8268.....	R3R-2-8268	408-31FY.....	R2-2-1050		
Neapco		408-31FYA.....	R2-2-1050		
N2-2-329.....	R2-2-329	410-31FY.....	R3R-2-8268		
N2-2-329-1	R2-2-3100	422.....	R25-2-422		
N2-2-459.....	R2-2-459	422A	R25-2-422A		
N2-2-479.....	R2-2-479	Spicer			
N2-2-799.....	R2-2-799	2-2-329	R2-2-329		
N2-2-799-1	R2-2-799-1	2-2-459	R2-2-459		
N2-2-899.....	R2-2-899	2-2-479	R2-2-479		
N2-2-939.....	R2-2-939	2-2-899	R2-2-899		
N2-2-1049.....	R2-2-1049	2-2-939	R2-2-939		
N2-2-1050.....	R2-2-1050	2-2-949	R2-2-949		
N2-2-1369.....	R2-2-1369	2-2-1049	R2-2-1049		
N2-2-1379.....	R2-2-1379	2-2-1369	R2-2-1369		
N2-2-1757.....	R2-2-3102				
N3-2-119.....	R3-2-119				

PART NUMBER INDEX



PART NUMBER	PG	PART NUMBER	PG
R2-2-329	3	R3-2-2500**	6
R2-2-459	3	R3-2-2502**	6
R2-2-479	3	R3-2-3700	6
R2-2-799	3	R3-2-5913	6
R2-2-799-1	3	R3-2-16990**	6
R2-2-799-2	4	R3R-2-675**	5
R2-2-799-3	4	R3R-2-8268	5
R2-2-799-4	4	R3R-2-9801**	5
R2-2-899	3	R4-2-669	7
R2-2-939	3	R4-2-8046**	7
R2-2-949	4	R4-2-8047**	7
R2-2-1049	3	R5-2-279	8
R2-2-1050	3	R6-2-749	8
R2-2-1369	4	R6.5-2-329	8
R2-2-1379	3		
R2-2-1399	5		
R2-2-1519	4		
R2-2-1879	4		
R2-2-1949	3		
R2-2-3100	4		
R2-2-3101	4		
R2-2-3102	4		
R2-2-3149	4		
R2-2-3173	3		
R2-2-3185	4		
R2-2-3189	5		
R2-2-3192	4		
R2-2-4811**	4		
R25-2-422	5		
R25-2-422A	5		
R25-2-422ALH	5		
R25-2-422B	5		
R2R-2-293	3		
R3-2-119	6		
R3-2-159	6		
R3-2-429	6		
R3-2-479	6		
R3-2-1579	6		
R3-2-1699	6		
R3-2-1819	6		
R3-2-1839**	6		

** New addition to MC0612-2 catalog

MANUFACTURER OF DRIVELINE COMPONENTS
1500 11TH AVENUE ROCKFORD, ILLINOIS 61104
PHONE (815) 962-1411 FAX (815) 965-4857
RockfordDriveLine.com